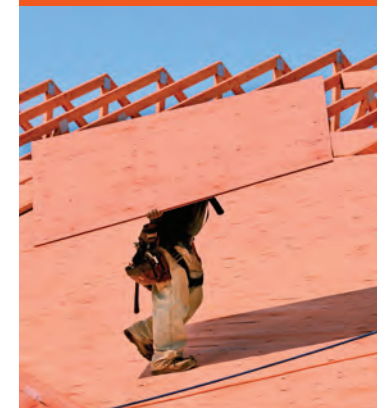
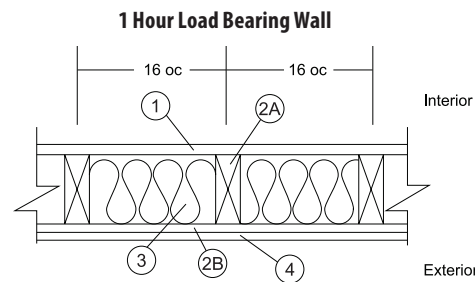


FlamePRO[®]

FIRE RETARDANT TREATED WOOD



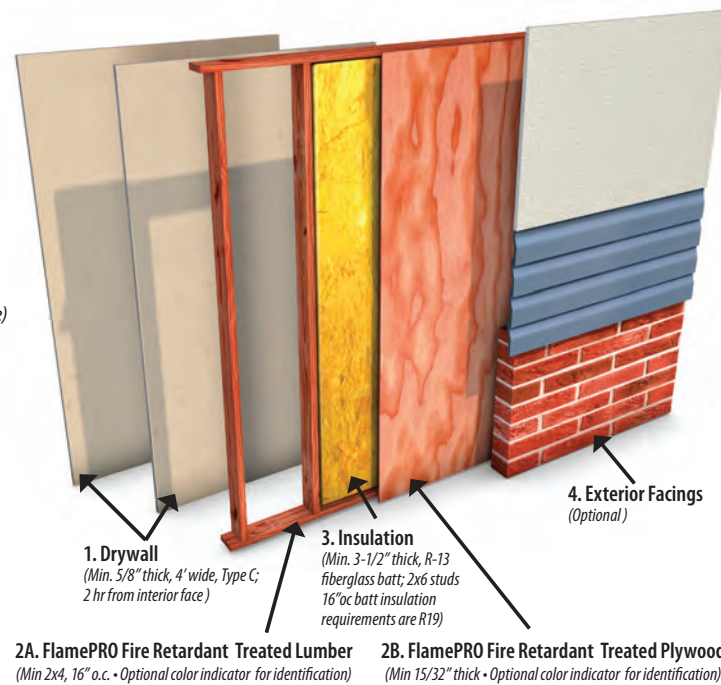
1 Hour Tested Interior Wall Assembly (60-02)



1. Drywall (1 hr from interior face)
- 2A. FlamePRO Lumber
- 2B. FlamePRO Plywood
3. Insulation
4. Exterior Facings (Optional)

Max. Tested Load:
100% of Design Load

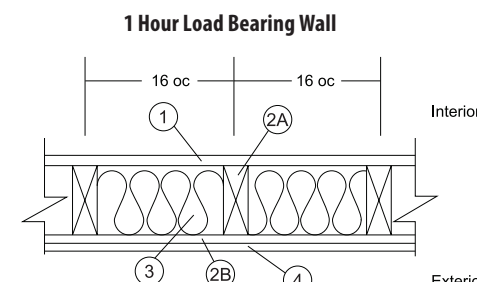
Fire Ratings:
1 hour, load bearing rated from one side (interior side only).
For details refer to ESR Report 4244.



2A. FlamePRO Fire Retardant Treated Lumber (Min 2x4, 16\"/>

2B. FlamePRO Fire Retardant Treated Plywood (Min 15/32\"/>

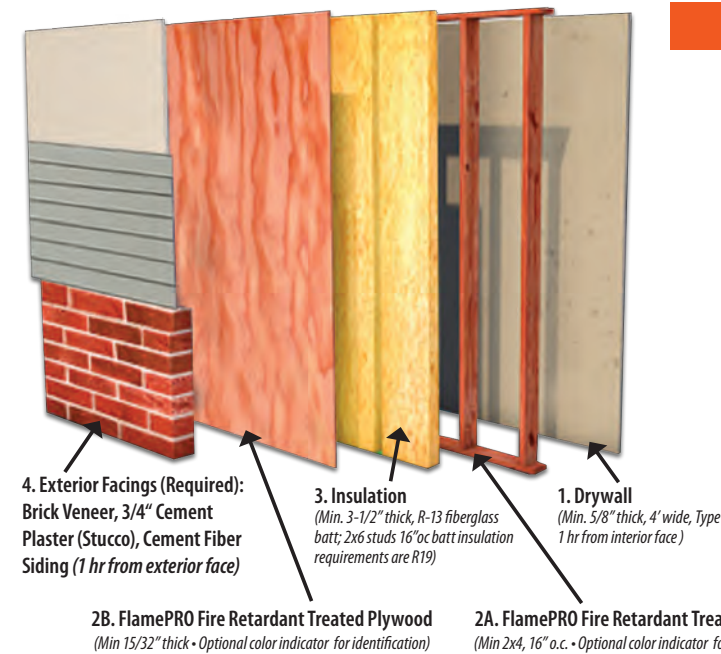
1 Hour Tested Exterior Wall Assembly (60-01)



1. Drywall (1 hr from interior face)
- 2A. FlamePRO Lumber
- 2B. FlamePRO Plywood
3. Insulation
4. Exterior Facings (Required):
Brick Veneer, 3/4\"/>

Max. Tested Load:
100% of Design Load

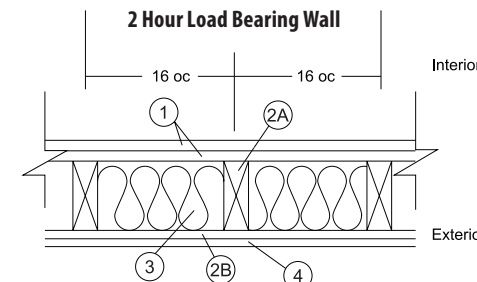
Fire Ratings:
1 hour load bearing rated from interior and exterior.
For details refer to ESR Report 4244.



2B. FlamePRO Fire Retardant Treated Plywood (Min 15/32\"/>

2A. FlamePRO Fire Retardant Treated Lumber (Min 2x4, 16\"/>

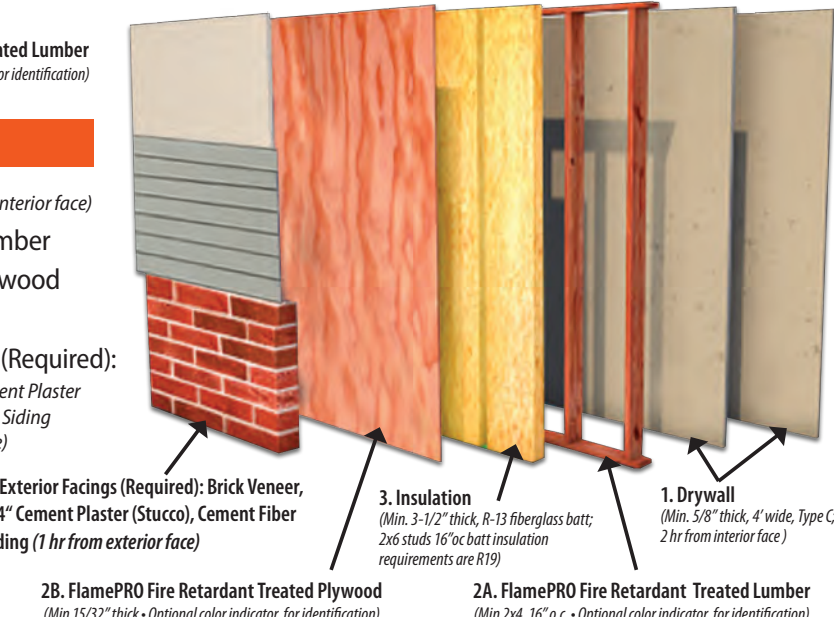
2 Hour Tested Exterior Wall Assembly (120-02)



1. Drywall (2 hr from interior face)
- 2A. FlamePRO Lumber
- 2B. FlamePRO Plywood
3. Insulation
4. Exterior Facings (Required):
Brick Veneer, 3/4\"/>

Max. Tested Load:
100% of Design Load

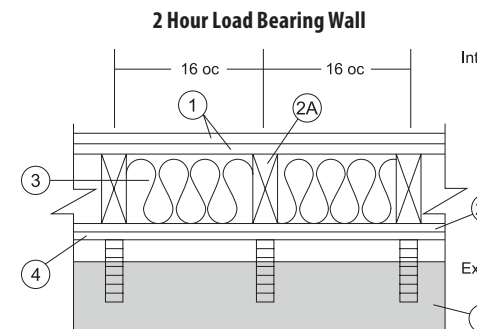
Fire Ratings:
2 hour load bearing rated from interior and 1 hour load bearing exterior.
For details refer to ESR Report 4244.



2B. FlamePRO Fire Retardant Treated Plywood (Min 15/32\"/>

2A. FlamePRO Fire Retardant Treated Lumber (Min 2x4, 16\"/>

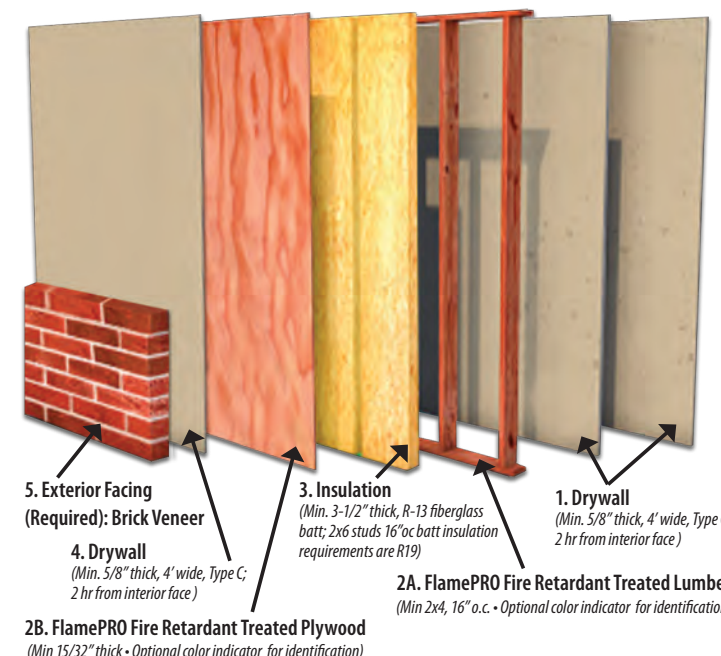
2 Hour Tested Exterior Wall Assembly (120-03)



1. Drywall (2 hr from interior face)
- 2A. FlamePRO Lumber
- 2B. FlamePRO Plywood
3. Insulation
4. Drywall
5. Exterior Facings (Required):
Brick Veneer

Max. Tested Load:
100% of Design Load

Fire Ratings:
2 hour load bearing



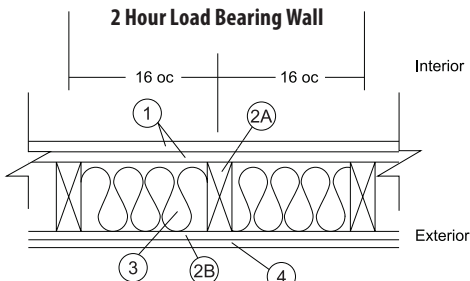
2B. FlamePRO Fire Retardant Treated Plywood (Min 15/32\"/>

2A. FlamePRO Fire Retardant Treated Lumber (Min 2x4, 16\"/>

FlamePRO[®]
FIRE RETARDANT TREATED WOOD

For more information, call 800-585-5161 or visit www.kopperspc.com

2 Hour Tested Interior Wall Assembly (120-01)



1. Drywall (2 hr from interior face)
- 2A. FlamePRO Lumber
- 2B. FlamePRO Plywood
3. Insulation
4. Exterior Facings (Optional)

Max. Tested Load:
100% of Design Load

Fire Ratings:
2 hour, load bearing rated from one side (interior side only).
For details refer to ESR Report 4244.

IMPORTANT INFORMATION

- Do not burn fire retardant treated wood. • Wear NIOSH N95 dust mask and goggles when cutting or sanding wood. • Wear gloves when working with wood. • Some fire retardant treated wood chemicals may migrate from the treated wood into soil/water or may dislodge from the treated wood surface upon contact with skin. Wash exposed skin areas thoroughly.
- All sawdust and construction debris should be cleaned up and disposed of after construction. • Wash work clothes separately from other household clothing before reuse.
- Fire retardant treated wood should not be used where it may come into direct or indirect contact with drinking water. • Do not use fire retardant treated wood under circumstances where it may become a component of food, animal feed, or beehives. • Do not use fire retardant treated wood as mulch. • Only fire retardant treated wood that is visibly clean and free of surface residue should be used. • If the wood is to be used in an interior application and becomes wet during construction, it should be allowed to dry before being covered or enclosed. • Disposal Recommendations - Fire retardant treated wood may be disposed of in landfills or burned in commercial or industrial incinerators or boilers in accordance with federal, state, and local regulations. • If you desire to apply a paint, stain, clear water repellent, or other finish to your fire retardant treated wood, we recommend following the manufacturer's instructions and label of the finishing product. Before you start, we recommend you apply the finishing product to a small exposed test area before completing the entire project to insure it provides the intended result before proceeding. • Projects should be designed and installed in accordance with federal, state, and local building codes and ordinances governing construction in your area and in accordance with the National Design Specifications (NDS) and the Wood Handbook. • Mold growth can and does occur on the surface of many products, including untreated and fire retardant treated wood, during prolonged surface exposure to excessive moisture conditions. To remove mold from the treated wood surface, wood should be allowed to dry. Typically, mild soap and water can be used to remove remaining surface mold. For more information visit www.epa.gov.
- Use fire retardant treated wood safely. Always read the label and product information before use. • Use fire retardant treated wood safely. Always read the label and product information before use.

For a complete specification call Koppers Performance Chemicals at 800-585-5161.

This is not a stand alone document and must be read in conjunction with other FlamePRO brand fire retardant treated wood literature and test data cited in the literature. For example, refer to the FlamePRO Specifications and the FlamePRO Limited Warranty Agreement. The only warranties made by Koppers Performance Chemicals are as set forth in the "FlamePRO Limited Warranty Agreement".

