

TOP REASONS

to Use FlamePRO® Fire Retardant Treated Wood Products

- FlamePRO Fire Retardant pressure treated wood products, as described in the ICC Evaluation Services, Inc. ESR-4244, meet all major model building code requirements.
- FlamePro complies with National Building Code of Canada. NBCC.
- UL Classified with an FR-S Rating for flame spread and smoke development values of 25 or less. ASTM E84 Extended 30-Minutes, UL 723, CAN/ULC-S102M.
- FlamePro Fire Retardant pressure treated wood products comply with AWPA UC-1 and UCFA use category systems, FlamePro treatment process meets the AWPA T1 standard. CSA 080.20 for lumber and CSA 080.27 for plywood
- UL GREENGUARD GOLD Certification - The FlamePRO preservative has undergone rigorous testing and met stringent standards for low volatile organic compound (VOC) emissions. Products certified to this criteria are suitable for use in schools, offices, and other sensitive environments.
- Cal Fire Certified.
- AIA Approved.
- FlamePRO Fire Retardant pressure treated wood products are backed by a 50 Year Limited Warranty Program from Koppers Performance Chemicals Inc.*
- Hygroscopicity testing conducted by a third party independent laboratory has confirmed that compared to untreated wood, FlamePro brand fire retardant treated wood does not pick up excessive moisture under ASTM D3201 test conditions.
- 1 Hour and 2 Hour Tested Interior Wall Assembly, and 2 Hour Tested Exterior Wall Assembly (ASTM E119). For details refer to ESR Report 4244.
- The majority of common lumber and plywood species used in building construction can be treated with FlamePRO.
- Low corrosion rates to code-approved metal fasteners and hardware.
- Optional orange color for building site recognition.
- BSD SpecLink: Master Specification Content for Architectures, Engineers, and Construction Markets.



For more information, call 1-800-585-5161 or visit www.kopperspc.com or icc-es.org, ESR Report 4244.

** Available at Koppers Performance Chemicals Inc., Attn: Consumer Affairs, P.O. Drawer O, Griffin, Georgia 30224-0249 or visit www.kopperspc.com*

FlamePRO treated wood products are produced by independently owned and operated wood treating facilities. FlamePRO® is a registered trademark of Koppers Performance Chemicals Inc. ©6/2019



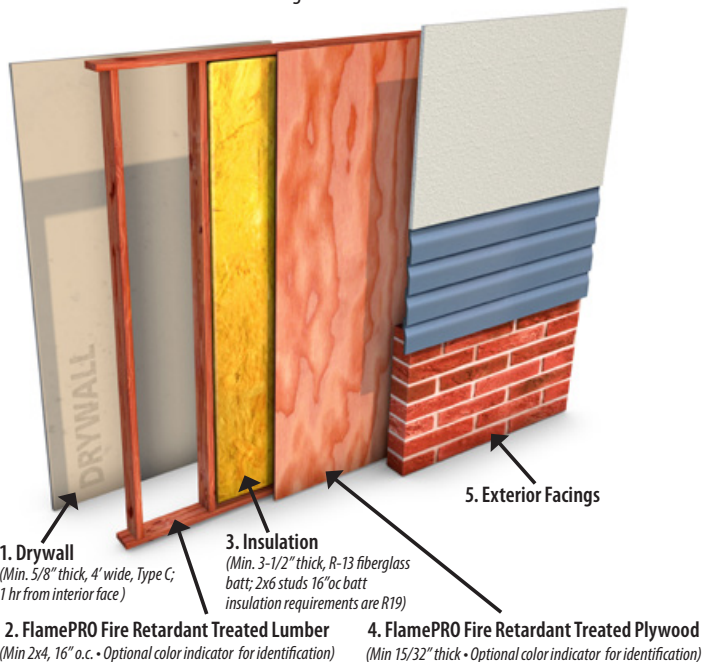
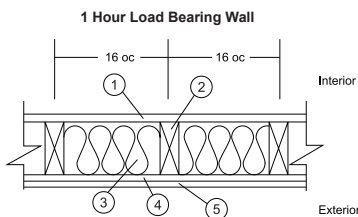
1 & 2 HOUR TESTED INTERIOR WALL ASSEMBLIES

1 Hour Tested Interior Wall Assembly (ASTM-E119)

Max. Tested Load: 100% of Design Load

Fire Ratings: 1 hour, load bearing rated from one side (interior side only).
For details refer to ESR Report 4244.

1. Drywall
2. FlamePRO Lumber
3. Insulation
4. FlamePRO Plywood
5. Exterior Facings

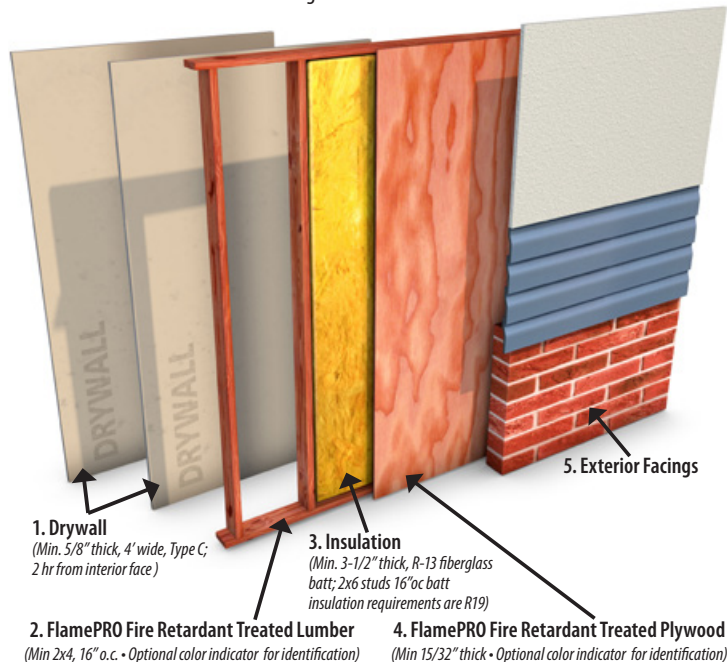
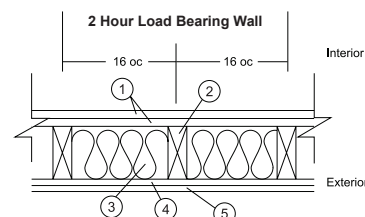


2 Hour Tested Interior Wall Assembly (ASTM-E119)

Max. Tested Load: 100% of Design Load

Fire Ratings: 2 hour, load bearing rated from one side (interior side only).
For details refer to ESR Report 4244.

1. Drywall
2. FlamePRO Lumber
3. Insulation
4. FlamePRO Plywood
5. Exterior Facings



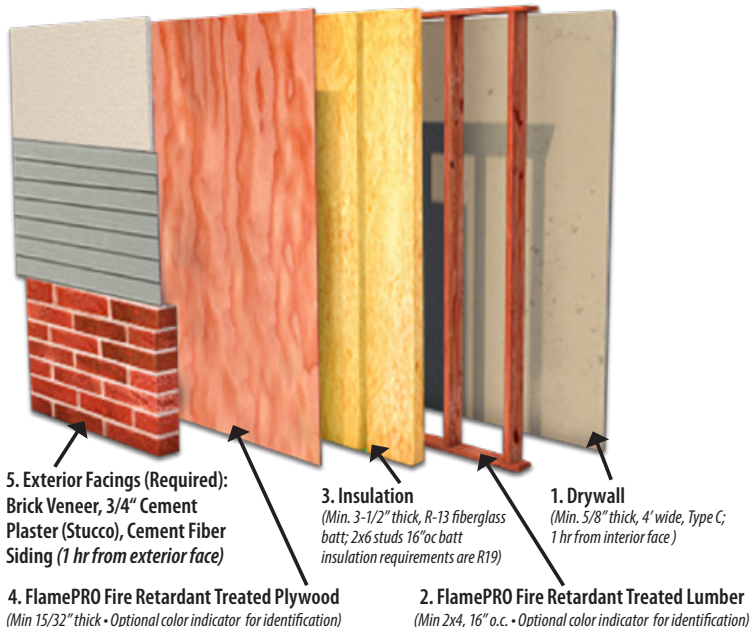
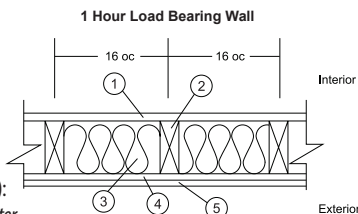
1 & 2 HOUR TESTED EXTERIOR WALL ASSEMBLIES

1 Hour Tested Exterior Wall Assembly (ASTM-E119)

Max. Tested Load: 100% of Design Load

Fire Ratings: 1 hour, load bearing rated from one side (interior side only).
For details refer to ESR Report 4244.

1. Drywall
2. FlamePRO Lumber
3. Insulation
4. FlamePRO Plywood
5. Exterior Facings (Required):
Brick Veneer, 3/4" Cement Plaster (Stucco), Cement Fiber Siding (1 hr from exterior face)



2 Hour Tested Exterior Wall Assembly (ASTM-E119)

Max. Tested Load: 100% of Design Load

Fire Ratings: 2 hour, load bearing rated from one side (interior side only).
For details refer to ESR Report 4244.

1. Drywall
2. FlamePRO Lumber
3. Insulation
4. FlamePRO Plywood
5. Exterior Facings (Required):
Brick Veneer, 3/4" Cement Plaster (Stucco), Cement Fiber Siding (1 hr from exterior face)

